

SIDE

FRONT

SIDE

REAR

SIDE

Front centre line

Back centre line

safe zone  
5mmbleed  
area  
3mmsafe  
zone  
5mmsafe  
zone  
7mm**Vanilla Fudge 200g**

**Ingredients:** Sugar, Glucose Syrup, Sweetened Condensed Milk, Butter (**Milk**), Vegetable Oil (Palm Kernel Oil, Palm Stearin Oil), Flavour, Salt, Emulsifier: **Soya** Lecithin E322.

**Allergens:** See ingredients in **bold**.  
Also, may contain **nuts, peanuts, egg**.

**Storage Conditions:** Store in cool, dry conditions, out of direct sunlight. Produced in England.

**For Best Before:** See pack

**Nutritional Information:** *Typical values per 200g tube.*  
Energy 3660KJ/870kcal; Protein 2.2g; Carbohydrates 155.0g;  
Fat 26.8g; Salt 0.4g.

Reorder code: **464**

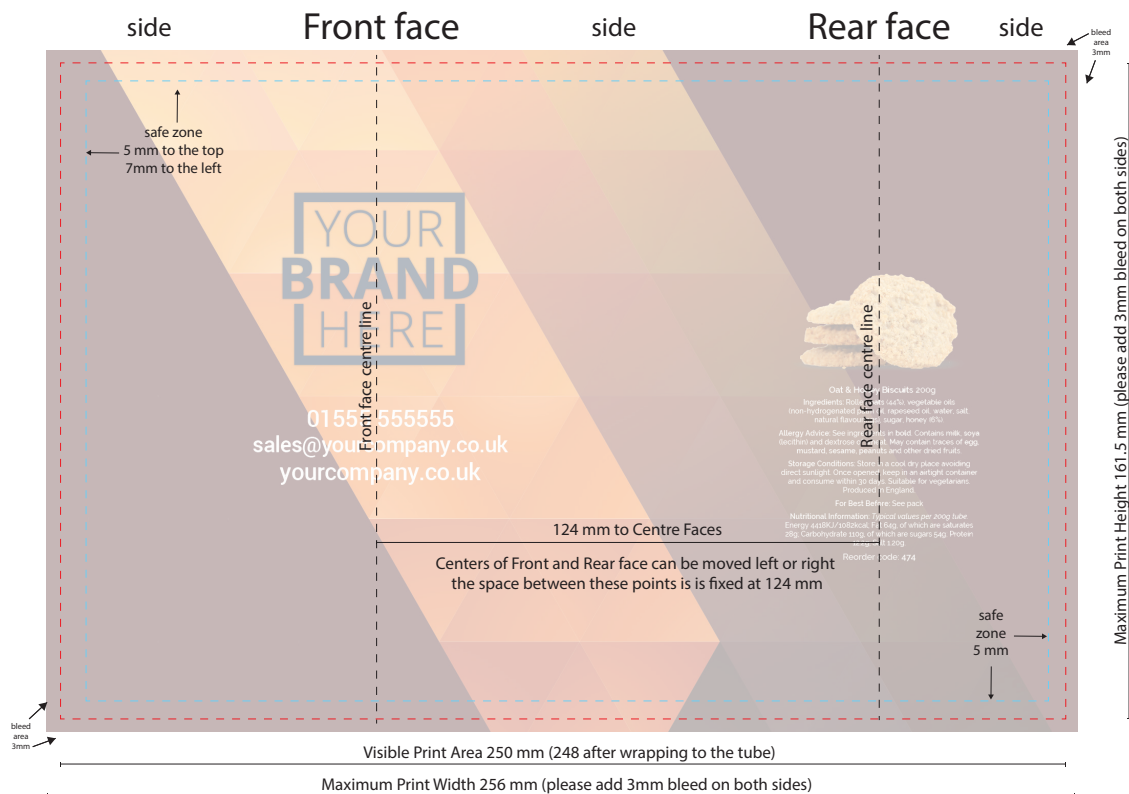
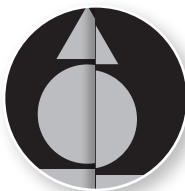
This information may be printed  
anywhere on the label:  
The ingredients, storage conditions, allergens,  
name, weight, best before instruction and  
contact details (address as a minimum) are a  
legal requirement.  
The Nutritional information is optional unless  
selling in a retail outlet.  
The reorder code is for user convenience.

Contact details such as address must be shown  
to meet statutory requirements.

safe zone  
5mmbleed  
area  
3mm

## Artwork Advisory

- Text should be minimum 8pt to remain legible.
- Light text on a dark background will reproduce better if bold.
- Please keep text and everything important out of the safe zone.
- All bitmaps should be at least 300dpi.
- Send bitmaps and all other graphic elements as CMYK.
- Avoid large areas of white space where possible, if required a different process may be needed to produce the label and this may cost extra.
- Avoid detail that has to match up at the label join as this cannot be guaranteed to align?
- Labels have gloss by default, matte finish and special effects are available on request and may cost extra.



Front face

Side



Rear face

Side



Due to variations beyond our control and the nature of the print process the colour on the pdf may differ from that on the final product.